

The Windward Artists Guild is a non-profit, volunteer, member guild, organized in 1960 by Windward artists. Through education, collaboration, encouragement, and exhibitions, the Windward Artists Guild supports, encourages, and promotes the production and appreciation of the visual arts, with emphasis on the Windward side. The Windward Artists Guild publishes a newsletter nine times each year.

We welcome your membership in the Windward Artists Guild. We invite you to join the guild and participate in furthering the arts. For complete information view our website at www.hawaiiwag.org or call 235-5545, or write Windward Artists Guild, P.O. Box 288, Kaneohe HI 96744.

Windward Artists Guild Membership Form

P.O. Box 288 Kaneohe, HI 96744

Make checks payable to Windward Artists Guild. Thank you. Date _____ New Renewal
 \$30 Regular Member \$15 Student Member (with full-time student ID)

Name	Phone	E-mail	Web Address
Mailing Address	City	Zip	Media

Volunteer Interests: Please check the areas where you are willing to help your organization.

- Serve on the board as an officer:** Secretary Treasurer Awards Chair E-mail Chair
 chair for exhibitions chair for programs, workshops, classes chair for hospitality newsletter editor
 chair for telephone tree chair for membership chair for publicity
- Serve as a committee member:** for exhibitions for programs, workshops, classes hospitality
 newsletter production telephone tree membership publicity
- I have computer skills for:** making spreadsheets scanning to preserve historical files
 word processing desktop publishing creating data base creating web sites
- I am willing to teach workshops in** _____

Windward Artists Guild
P. O. Box 288
Kaneohe, HI 96744

REMEMBER TO LOOK AT YOUR ADDRESS LABEL If the date is in red, please renew your membership today. Use the membership form above, attach a check, and mail it to the new post office address in Kaneohe. If you have renewed recently and the date is still in red, please call Ruth at 235-5545.

First Class



Published nine times each year, irregularly
 Volume 2008, Number 8, October 2008
 P.O. Box 288, Kaneohe, Hawaii 96744
www.hawaiiwag.org

Member Exhibition at Ho'omaluhia

The member exhibition, held at Ho'omaluhia Botanical Gardens Gallery from October 5 to 31 is a great success.

Our curator, Norman Graffam, selected and arranged 65 pieces from 46 artists.

We owe a big thank you to our co-chairs, **Julie McIntyre** and **Tamara Doehm**, for a job well done. Likewise, our hospitality chair, **Cheryl Kirkland**, did a great job organizing the reception table at the Sunday afternoon reception, with the able help of her husband along with **Shirley** and **Al Samuelson**. Thanks so much, too, to all our volunteers. **Hoppy Smith** and **Kathy Macdonald** helped Julie and Tamara to paint the pedestals on the Thursday before the show. Workers at the intake day either in the morning or the afternoon or all day, included **Charlie Ogata**, **Jack Lee**, **Jim Drorbaugh**, **Sherrie Harris**, **Linda Fox**, **Marti Rounds**, **Kathy Macdonald**, **Ruth Pistor**, **Barbara Littenberg**, **Allan and Shirley Samuelson**, **Don Johnson**, **Bob Murray**, **Jane Raissle**, **Raki Briscoe**, **Walt Flood**, **Robin Minton**, and **Laurie Freed**. Great thanks to **Bonnie McCann** for designing the beautiful post cards and the e-mail invitations. Thanks to **Ruth Johnson** for sending the e-mail invitations and the pleas for extra help. If we forgot anyone, please know that we are grateful to you and to all the family members and friends who pitched in to help. Thanks to everyone for the great food at the reception. To all members out there who did not participate in the show, do take time to stop by and take a look. It is truly a beautiful show.

And to all artists in the show, remember now to pick up your pieces on November 1, at 10:00 in the morning.

Windward Artists Guild Holiday Party

Saturday, December 6, 2008, 5:30 to 8:30
Sakura Restaurant at Olomana Golf Links
41-1801 Kalaniana'ole Hwy, Waimanalo



It's time to send in your reservation and your money and plan to join this wonderful event. This is one party you don't want to miss. We have delicious food, lovely ambience, good friends, and loads of fun. In addition to our traditional lively white elephant frivolity, we plan an auction and games.

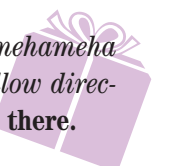
Bring your spouse, your partner, your friends. The party is for all of us. **Cost is \$20 per person. The meal is a buffet dinner with no host bar. Send checks made out to Windward Artists Guild and the completed registration form (page 3 of this newsletter) to Kathy Macdonald, 46-428 Holokaa St., Kaneohe, HI 96744, before November 15.** We must have your payment by the due date. **No payment at the door.**

Everyone please bring a white elephant gift for the White Elephant Frivolity. Remember to bring an extra one for each of your guests as they will want to participate in the fun. This tradition has been one of the highlights of our WAG parties. So **what is a white elephant?** This great recycling opportunity is where you can get rid of some of those things you don't want, or you can bring something from your studio or home that you think a fellow artist might like to own. **NO BUYING ANYTHING NEW.** The trick is to wrap the item as a beautiful present so no one can tell what it is.

Also, we will need new or "very gently used" items for the auction. Please see information on page 2 of this newsletter.

Directions to Sakura at Olomana Links: *Coming from Honolulu, take the Pali Highway over the Koolau. Continue on this road until you see Castle Medical Center on the left side of the road. This is the fourth stoplight after crossing the Koolau. At this intersection, turn right. You will be on Kalaniana'ole Highway. Continue on this highway for 2 and 1/2 miles. You will see the Olomana Links on the left. Turn before the blinking light. This is at the point when the highway changes from four lanes to two lanes. The restaurant is very easy to find and there is plenty of free parking. Do bring an umbrella in December to the Windward side.*

If you are coming on the H-3, turn right off the freeway on to Kamehameha Highway, drive 1 mile to the Pali Highway intersection, and follow directions above. Make your reservations today. Don't delay. See you there.



President's Message



Dear Friends of Light:

Our profound thanks to all the artists who have work in our show at Ho'omaluhia and to those who volunteered to put it all together, and to Norman Graffam whose artistic eye and sense of beauty are reflected in the show. Until you get your pieces into a gallery or art museum, proper lighting of your work is often a problem. There are plenty of shadows and poorly lit pieces in our present show. Kathy McDonald wondered if WAG might take on the project of establishing better lighting at the gallery as a service project. A lighting gift in the Ho'omaluhia gallery would reflect favorable on WAG as a non-profit organization supporting community art. However, given the state of our economy and the cost of art supplies we all might stretch our pallets and our creative juices to include some of our less favored colors and become more creative in using some of the art materials that we have set aside for years or stored in the backs of closets. So here is wishing you some light to delight all of your shadows. Aloha, Don

Windward Artists Guild Board of Directors

President	Don Johnson dkrajkahiko@hawaii.rr.com	235-5545
First V. President	Tamara Doehm doehmt001@hawaii.rr.com	352-9257
	Julie McIntyre mcintyrej001@hawaii.rr.com	261-0041
Second V. President	Larak Briscoe rakiraku@gmail.com	216-7093
Recording Secretary	Brian Aburano brian.p.aburano@hawaii.gov	254-5064
Corresponding Secretary	Bonnie McCann mccannr002@hawaii.rr.com	239-1661
Treasurer	Kathy Macdonald kjmcdonald@sprintmail.com	234-0218
Newsletter Editor	Laurie Freed lfreed@hawaii.rr.com	259-9490
Parliamentarian	Ruth Johnson dkrajkahiko@hawaii.rr.com	235-5545
Education Co-Chairs	Jill Butterbaugh jillart@hawaii.rr.com	261-2742
	Linda Fox tjlfox@yahoo.com	261-1648
Publicity/Webmaster	Walter Flood waltflood@gmail.com	922-1659
Hospitality	Cheryl Kirkland cannkirkland@yahoo.com	262-0608
Historian	Amy Hall chichidongo@mac.com	753-1023
Telephone Chair	Dee Van Dyke dvandyke@lava.net	949-8885

CONGRATULATIONS!

Congratulations to our many members who have shown their work at various places around the island. Please let us know where you've been showing your work. Call 235-5545 or e-mail dkrajkahiko@hawaii.rr.com. Thank you.

Ambra Bee, Brian Bozlee, Mukta Gupta, Mikki O'Phelan, Jill Butterbaugh, and Beth Anderson in Confluence at Gallery Iolani, Windward Community College, September 12 to October 8.

Cheryl Kirkland in 4th Annual Plein Air Show at Honolulu Country Club, September 28 to November 16.

Laurie Freed in 5th Juried Open Pastel Exhibition at Pauahi Tower, October 25 to November 21.

Fred Smith in "Darkness" at Koa Gallery from September 17 to October 10. Fred also had work in the Honolulu Japanese Chamber of Commerce show at Linekona.

Dee Van Dyke, Lori Uyehara, Mandell Andres in the Hawaii Craftsmen show at The ARTS at Mark's Garage, until October 18.

Ron Kent and Jodi Endicott for being chosen to build benches for the Contemporary Museum fund raiser. The benches will be exhibited at The Contemporary Museum until October 26 when they will be auctioned to provide funds for the museum general operating fund.

Lori Uyehara was an invited artist in the Hawaii Craftsmen 41st Annual Exhibition at Linekona in October.

Julie McIntyre and other WAG artists in the Hawaii Watercolor Society exhibition at Pauahi Tower September 27 to October 24.

Ruth Laird Pistor for the student exhibition as a part of the HWS open show at Pauahi Tower. Ruth has taught eleven women at the Women's Community Correctional Center for one three-hour class each week for a year. 27 paintings were shown by her students. What a great community service, Ruth!

HOLIDAY PARTY SILENT AUCTION

W.A.G. is planning a small, fun silent-auction at this year's Holiday Party!! The funds raised will help support our workshops and other educational programs, and YOU can help by donating items!!!

If you wish to donate (or offer to help), please call Kathy Macdonald at 234-0218 or e-mail her at kjmcdonald@sprintmail.com. The sooner we know what you plan to donate the better. All items should be "very gently used" or new. We'll need to receive them no later than November 15. Be sure to keep something back for the white elephant gift exchange.

Some auction possibilities include Christmas/Holiday items, art related supplies, books, equipment, good hand crafted jewelry, wearable art such as scarves, creative boxes, ceramics, certificates for dining, theater, services, whatever else might appeal to you. Unfortunately, live plants, food, and original art by you or another member are not appropriate for this silent auction.

Please call Kathy today at 234-0218 or e-mail her to let her know what you plan to donate. Thank you.

OPPORTUNITIES

MICHELLE KASKOVICH has started an art club for elementary students after school at Mokapu Elementary School. She has one group on Wednesday and one on Thursday. If you are interested in helping young children develop their artistic skills, Michelle welcomes your help. You can e-mail her at malinkiamishka@yahoo.com. Michelle is new to Hawaii and a new member of Windward Artists Guild, already offering her services to the community. Great!

THE ARTISTS OF HAWAII 2009 submission deadline is January 2. Submissions must be made on line. To help artists, the Honolulu Academy of Arts will hold a free digital workshop from 10 to 3 on November 1. Call 532-8770 or www.honoluluacademy.org.

THREE SALES TOO GOOD TO MISS

WINDWARD POTTERS GUILD sale at Kailua Elementary School, Kuulei Road, Saturday, November 29 from 8 to 2:30. **DAGMAR KAU** and **SHIRLEY SAMUELSON** will be there to greet you.

CERAMIC RAKU ART BY RAKIRAKU Pottery sale by **LARAK BRISCOE**, our membership chair, will host a two-day sale, Saturday and Sunday, November 29 and 30 from 10 to 4 pm both days. On sale will be a limited quantity of unique handcrafted gallery quality pieces between \$10 and \$100, perfect for your holiday shopping needs. 91-1072 Paaoloulu Way, Kapolei Knolls, off of Farrington Highway, across from the Kapolei Golf Course.

IMPRESSIONS, THE ANNUAL PRINT SALE BY HONOLULU PRINTMAKERS at Linekona, November 28 to 30 from 10 to 4:30. Many WAG members are members of this printmakers group.

Windward Artist Guild Holiday Party Registration Form: Saturday, December 6, 2008, 5:30

Write check to Windward Artists Guild. Mail to Kathy Macdonald, 46-428 Holokaa St. Kaneohe, HI 96744 by Nov. 15. **Please print neatly so that we can make the name tags correctly.** Thank you.

Names of persons attending: _____

Phone Number of person sending check _____

Check Amount _____ Check Number _____

CALENDAR OF EVENTS

FRAMING TIPS FOR THE ARTIST

Ho'omaluhia Botanical Gardens lecture room
October 26, 4:00 to 5:30. Arrive by 3:45.

ANNUAL MEMBER EXHIBITION

Ho'omaluhia Botanical Gardens Gallery
Pick up at end of show: November 1, 10-11:00

BOARD OF DIRECTORS MEETING

November 11, 2008, 6:30 p.m.
Don Johnson home, 45-320 Kahiko Street

WAG HOLIDAY PARTY December 6, 2008
5:30 to 8:30 p.m. Sakura's at Olomana Links

OPEN EXHIBITION May 9 – June 13, 2009

Pauahi Tower Gallery, Bishop Square

ANNUAL MEMBER EXHIBITION October, 2009

Ho'omaluhia Botanical Gardens Gallery

OPEN EXHIBITION February 20 – March 20, 2010

Pauahi Tower Gallery, Bishop Square

ANNUAL MEMBER EXHIBITION October, 2010

Ho'omaluhia Botanical Gardens Gallery

OPEN EXHIBITION: April 20 – May 28, 2011

Pauahi Tower Gallery, Bishop Square